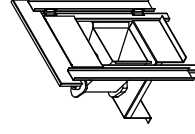
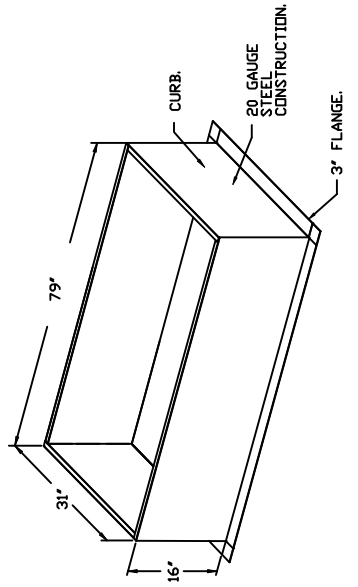
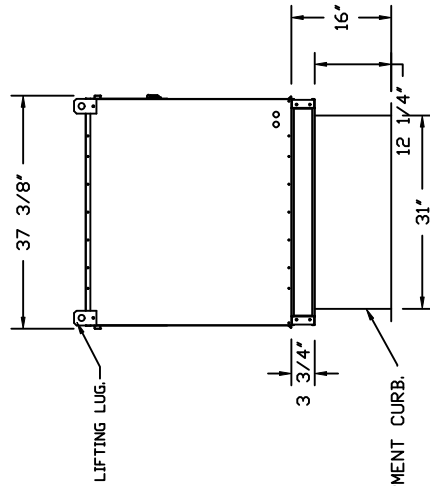
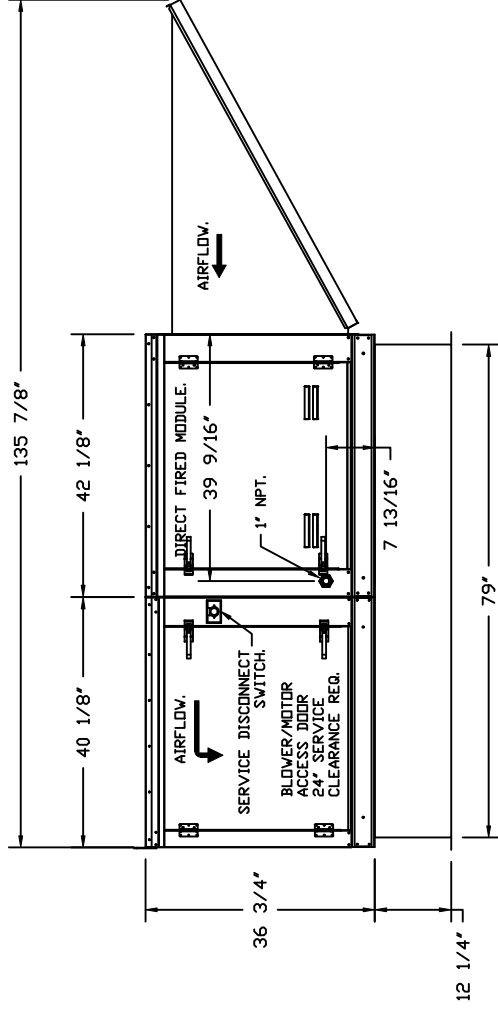
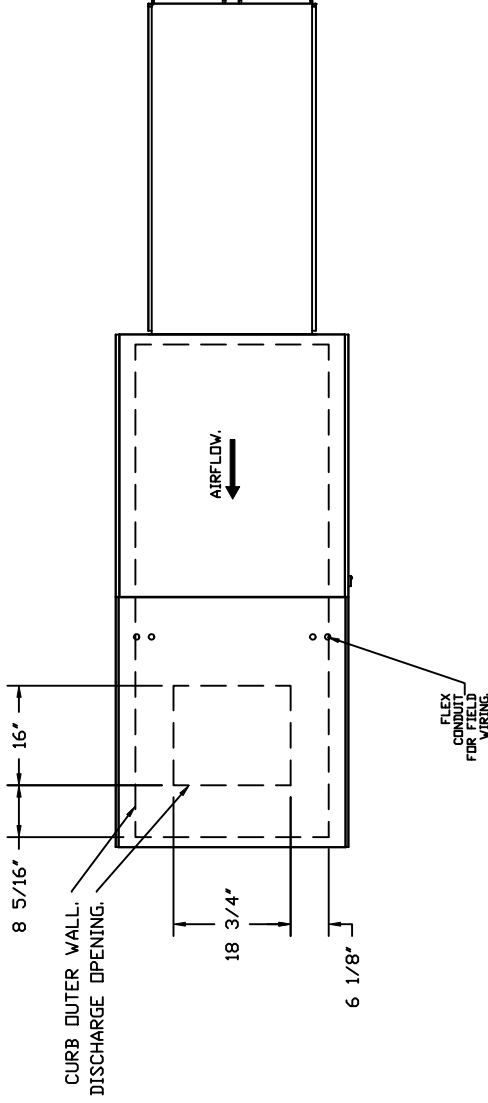


# RUPP MODEL R2D.250-20D ~ 676 LBS.



DIRECT FIRED (DF) PROFILE PLATE ASSEMBLY

**DIRECT FIRED PROFILE PLATE SPECIFICATIONS**

THESE SPECIFICATIONS ARE SUBJECT TO CHANGE WITHOUT NOTICE. RUPP HAS PATENTED OUR SELF-ADJUSTING PROFILE PLATES DESIGNED TO ENSURE PROPER AIR VELOCITY AND PRESSURE DROP ACROSS THE BURNER. PROFILE PLATES SHALL BE MANUFACTURED TO TOLERANCES THAT INSURE CLEAN BURNING AND PROPER AIR FLOW. ALL PROFILE PLATE ASSEMBLIES SHALL BE INCLUDED IN THE DF UNIT'S ETL LISTING AND COMPLY WITH COMBINED SAFETY STANDARDS ANSI Z83.4 AND CSA 37. NON-RECIRCULATING DF HEATERS AND ANSI Z83.18 RECIRCULATING DF HEATERS.

SPRING LOADED BURNER PROFILE PLATES ARE ENGINEERED TO AUTOMATICALLY REACT TO THE MOMENTUM OF A FRESH AIR STREAM, WITHOUT THE NEED FOR ANY MOTORS OR ACTUATORS TO MECHANICALLY ADJUST THEM WITH THIS FEATURE. ALL DF UNITS ARE DESIGNED FOR DEMAND CONTROL VENTILATION (DCV) REQUIREMENTS.

ALL PROFILE PLATE ASSEMBLIES SHALL BE INCLUDED IN THE DF UNIT'S ETL LISTING AND COMPLY WITH COMBINED SAFETY STANDARDS ANSI Z83.4 AND CSA 37. NON-RECIRCULATING DF HEATERS AND ANSI Z83.18 RECIRCULATING DF HEATERS.

PROFILE PLATES SHALL BE FORMED FROM 20 GAUGE GALVANIZED STEEL.

PROFILE PLATES SHALL VARY IN SIZE PER UNIT.

PROFILE PLATES SHALL BE PERMANENTLY MOUNTED TO THE CURB.

DESIGN SHALL INCORPORATE PROPERLY TORQUED, PERMANENTLY MOUNTED SPRING BOLTS.

SPRING BOLTS SHALL BE MADE FROM PLATED STEEL.